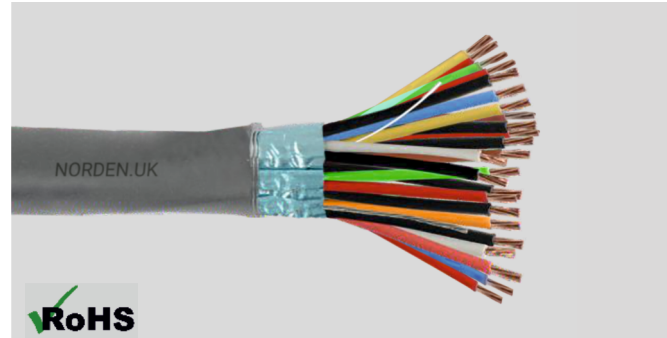


# 15 PAIR 18 AWG OVERALL FOIL SHIELDED PAIRED CABLE



The Shielded Paired Cable from NORDEN is suitable to use for Audio, Control, and Instrumentation purposes. The cable is constructed with PE insulation, an overall shield of 100 % Aluminium– Polyester Foil and PVC / LSZH outer jacket.



## CABLE CONSTRUCTION

|  |                                       |   |                             |
|--|---------------------------------------|---|-----------------------------|
| <b>Conductor</b><br>Stranded Tinned Copper | <b>Shielding</b><br>Al-Polyester Foil | <b>Outer Jacket</b><br>PVC/LSZH             | <b>Jacket Color</b><br>Grey |
| <b>Insulation</b><br>PE (Polyethylene)     | <b>Foil Coverage</b><br>100%          | <b>Drain Wire</b><br>Stranded Tinned Copper | <b>Rip Cord</b><br>Yes      |

## PHYSICAL CHARACTERISTICS

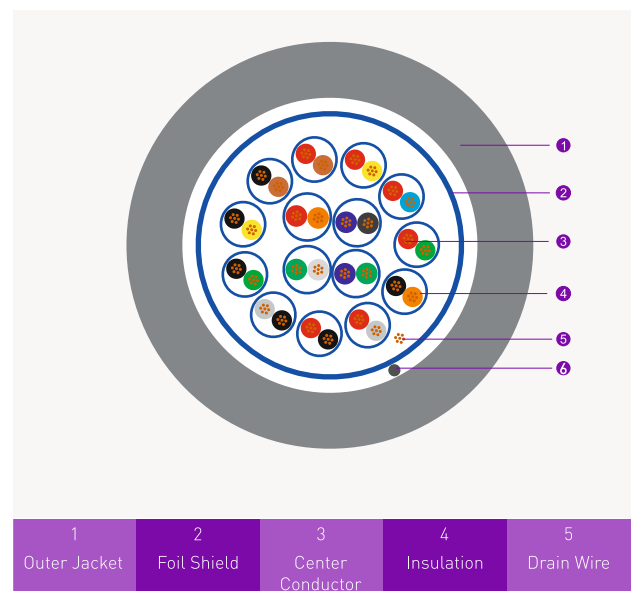
| Characteristic                   | Value               |
|----------------------------------|---------------------|
| No. of Pair                      | 15                  |
| Conductor Size                   | 18 AWG , 7 x 0.4 mm |
| Insulation Diameter              | 1.8 ± 0.05 mm       |
| Insulation Thickness             | 0.3 mm              |
| Drain Wire Size                  | 7 x 0.2 mm          |
| Jacket Thickness                 | 1.2 mm              |
| Jacket Diameter                  | 16.7 ± 0.4 mm       |
| Max. Recommended Pulling Tension | 940 LBS             |
| Min. Bend Radius ( Install )     | 15 X OD             |
| Operating Temperature            | -20C to +75C        |

## ELECTRICAL CHARACTERISTICS

| Characteristic                           | Unit | Value    |
|--|------|----------|
| Nom. Capacitance Cond. to Cond.          | pF/m | 85 ± 20  |
| Nom. Capacitance Cond. to Cond. & Shield | pF/m | 160 ± 20 |
| Nom. Conductor DCR                       | Ω/km | ≤ 20.6   |
| Nom. Characteristic Impedance            | Ω    | 45 ± 15  |
| Max. Recommended Current @ 25°C          | A    | 52       |
| Voltage Rating                           | V    | 300      |
| Sparker Test                             | VAC  | 3000     |

## MECHANICAL CHARACTERISTICS

| Characteristic                       | Value    |
|--------------------------------------|----------|
| Test Material                        | PVC/LSZH |
| Before Tensile Strength (Mpa)        | ≥13.8    |
| Aging Elongation (%)                 | ≥100     |
| After Tensile Strength [% of unaged] | ≥85      |
| Aging Elongation [% of unaged]       | ≥50      |
| Cold Bend (-20±°C x 4 hrs)           | No Crack |



|                   |                  |                       |                 |                 |
|-------------------|------------------|-----------------------|-----------------|-----------------|
| 1<br>Outer Jacket | 2<br>Foil Shield | 3<br>Center Conductor | 4<br>Insulation | 5<br>Drain Wire |
| 6<br>Rip Cord     |                  |                       |                 |                 |

# 15 PAIR 18 AWG OVERALL FOIL SHIELDED PAIRED CABLE



## INSULATION COLOUR CODE

| Individual Pair | Colour       |
|-----------------|--------------|
| Pair 1          | Black/Red    |
| Pair 2          | Black/White  |
| Pair 3          | Black/Green  |
| Pair 4          | Black/Blue   |
| Pair 5          | Black/Yellow |
| Pair 6          | Black/Brown  |
| Pair 7          | Black/Orange |
| Pair 8          | Red/White    |
| Pair 9          | Red/Green    |
| Pair 10         | Red/Blue     |
| Pair 11         | Red/Yellow   |
| Pair 12         | Red/Brown    |
| Pair 13         | Red/Orange   |
| Pair 14         | Green/White  |
| Pair 15         | Green/Blue   |

## ORDERING INFORMATION

| Part Number | Description   |
|-------------|---|
| 72-3215181  | 15 Pair x 18 AWG Overall Foil Shielded Paired Cable PVC ( PE Insulation & PVC Outer Jacket)   |
| 72-3215182  | 15 Pair x 18 AWG Overall Foil Shielded Paired Cable LSZH ( PE Insulation & LSZH Outer Jacket) |