

# HIGH-DENSITY OPTICAL DISTRIBUTION FRAME

Norden High-Density Fibre Optic Distribution Frame provides Flexible Cabling access, an expandable frame concept, integrated cable management, and a Future-proof modular design with the highest termination capacity possible and superior cable management. The high-density side access type of patch panel is also designed to fit a variety of termination, splice, and storage applications.



## FEATURES

- Designed to be used with high-density type patch panels
- Lockable front door
- Highly stable and rigid construction
- Standard 19" & ETSI installations
- Front cable access only
- Supports 4,320 LC or 2,880 SC ports per cabinet.
- Increased port density.
- Allows for back-to-back frame configuration.
- Modular design: Enables one rack for many applications e.g. central office, FTTx and data center.
- Increased patch cord routing space: Supports standard 1.6- and 2.0-mm patch cords.

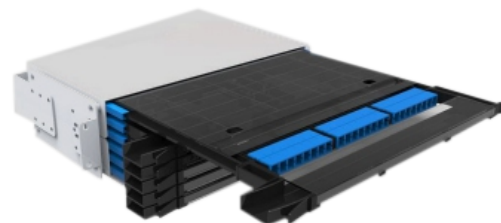
## DISTRIBUTION FRAME DESIGN & MATERIALS

Material	Cold rolled steel; Powder coated
Material Thickness	Front doors and rear panel: 1.5mm, other: 2.0mm
IP Rating	IP 20
Maximum Port Capacity	LC (4320) , SC ( 2880) Splice & Patch
Cable Entry	Top
Cable Entry Port Type	Rectangle Hole with Brush
Operating Temperature	-5°C to + 60°C
Humidity	90% at 30°C
Frame size & dimension(H*W*D)	47U ( 2200*900*300mm)

\*Customized designs are available upon request

## ODF SUB -RACK & DISTRIBUTION MODULE

Norden ODF (Optical Distribution Frame) rack mount patch panel is compatible with the most advanced splice & patch system and cable management ever developed for high-density applications on carrier & transmission side.



## FEATURES:

- Easy installation: 19", 21" and 23" rack mounting
- Easy removable of modules
- Sliding Rails are used for easy installation of High-density Module.
- This Module Support Splicing & Termination , it also has options for splitters & fibre Storage.
- Each module can complete the splice and distribution processes of 24 SC or 36 LC

# HIGH-DENSITY OPTICAL DISTRIBUTION FRAME

## DESIGN & MATERIAL (ODF SUB -RACK & DISTRIBUTION MODULE)

Material	Cold rolled steel; Powder coated
Size	1U ,2U,3U & 4U
Operating Temperature	5°C to + 60°C
Humidity	90% at 30°C
Air Pressure	70kPa – 106kPa
Optical Distribution Module Dimension	326mm*13mm*306.5mm
Adaptor	SC (Duplex) , LC (Quad)

ODF Height	ODF Depth	ODF Width	ODF Capacity		Distribution Module Quantity
			LC	SC	
1U (Without Cover)	280	19"/21"/23'	108	72	3
2U	280	19"/21"/23'	216	144	6
3U	280	19"/21"/23'	324	216	9
4U	280	19"/21"/23'	432	288	12

## ORDERING INFORMATION:

### DISTRIBUTION FRAME

Part Number	Description
NC13-1FD4320X	High-Density Fibre Distribution Frame-Unloaded

### ODF- SUB-RACK

Part Number	Description
NC13-ODF1ULC22X	ODF-Sub-Rack 1U with LC/UPC Quad Adaptor Loaded - 108 Cores
NC13-ODF2ULC22X	ODF-Sub-Rack 2U with LC/UPC Quad Adaptor Loaded - 216 Cores
NC13-ODF3ULC22X	ODF-Sub-Rack 3U with LC/UPC Quad Adaptor Loaded - 324 Cores
NC13-ODF4ULC22X	ODF-Sub-Rack 4U with LC/UPC Quad Adaptor Loaded - 432 Cores
NC13-ODF1USC13X	ODF-Sub-Rack 1U with SC/APC Duplex Adaptor Loaded - 072 Cores
NC13-ODF2USC13X	ODF-Sub-Rack 2U with SC/APC Duplex Adaptor Loaded - 144 Cores
NC13-ODF3USC13X	ODF-Sub-Rack 3U with SC/APC Duplex Adaptor Loaded - 216 Cores
NC13-ODF4USC13X	ODF-Sub-Rack 4U with SC/APC Duplex Adaptor Loaded - 288 Cores