

NORDEN VEHICLE CAMERA SOFTWARE

Version: 1.0.0

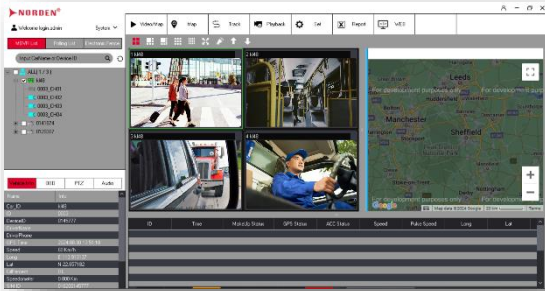
INTRODUCTION:

Vehicle camera software refers to a suite of applications and tools designed to optimize the functionality of cameras installed in vehicles. Norden vehicle cameras, often mounted on interior or exteriors, serve multiple purposes, ranging from enhancing driver safety to improving fleet management efficiency. The software facilitates various functions, including continuous video recording, real-time monitoring, event detection, and storage management. One of its key features is the ability to capture and store footage, either triggered by specific events like sudden braking or continuously during vehicle operation. This recorded data can be invaluable for various purposes, such as investigating accidents, monitoring driver behavior, or providing evidence in insurance claims. Additionally, vehicle camera software often includes advanced analytics capabilities, enabling the analysis of driver performance, identification of risky behaviors, etc.

HIGHLIGHTS:

1. **Monitoring Interface:** Provides a user-friendly interface for monitoring and managing the camera feeds.
2. **Recording and Storage:** Continuously records video footage from the cameras while the vehicles are in operation.
3. **Event Detection and Alerts:** Employs algorithms to detect specific events, such as collisions, harsh braking, or unauthorized vehicle access, based on the recorded footage.
4. **Data Analysis and Reporting:** Users can analyze the recorded footage and generated data to gain insights into driver behavior, vehicle performance, and safety compliance.
5. **Continuous Video Recording:** Enables continuous recording of footage during vehicle operation, ensuring that critical events are captured for later review and analysis.
6. **Event-triggered Recording:** Can be configured to automatically start recording when specific events occur, such as sudden braking, collisions, or other triggers defined by the user.
7. **Real-time Monitoring:** Provides live video feeds from vehicle cameras to a central monitoring station or mobile device, allowing for immediate response to potential incidents or emergencies.
8. **Storage Management:** Efficiently manages the storage of recorded footage, including compression techniques to optimize storage space and ensure that critical data is retained for the required duration.

EYETRACK CLIENT SOFTWARE

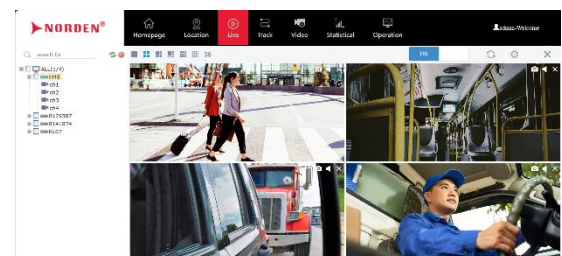


1. **Comprehensive Vehicle Monitoring:** Monitor up to 5000 vehicles simultaneously in real-time, ensuring unparalleled oversight of fleet operations.
2. **Advanced Video and Audio Surveillance:** Real-time video and audio monitoring, enabling meticulous observation of vehicle activities.
3. **Multi-screen Display:** Display up to 32 vehicle images simultaneously in single or multiple screens, allowing for comprehensive monitoring at a glance.
4. **Real-time Vehicle Status Updates:** Receive instant updates on vehicle metrics including online status, speed, location, brake, and parking sensor data, facilitating prompt decision-making and operational control.
5. **Alarm System:** Generate alarms during vehicle steering, brake, and other incidents, ensuring swift response to potential issues or emergencies.
6. **Configurability and Maintenance:** Support various functionalities such as time correction, software upgrades, parameter configuration, and maintenance tasks like oil and electronic brake management, ensuring optimal performance and adaptability.
7. **Dynamic Image Capture:** Capture images in real-time, providing visual evidence and documentation of critical moments.
8. **Recording and Playback:** Record and playback video and audio in real-time, enabling retrospective analysis and evidence collection.
9. **Communication Flexibility:** Facilitate communication with drivers through features like voice intercom,

broadcasting, enhancing operational efficiency and safety.

10. **Route History Playback:** Access and review vehicle route history for analysis and optimization purposes, enhancing logistical efficiency and route planning.
11. **Route Management:** Precise control over vehicle movements and adherence to designated routes.
12. **Alarm Management:** Configure and manage various alarms including speed, emergency, video signal loss, HDD error, and E-map alarms, ensuring proactive response to potential risks.
13. **Map Mode:** Google Maps facilitate accurate positioning and navigation.
14. **Multi-client Access Control:** Support multiple client logins simultaneously with customizable permissions, ensuring secure and controlled access to the monitoring system.
15. **Automatic Data Transfer:** Enable automatic downloads for efficient data retrieval and management, streamlining operational processes.
16. **Comprehensive Logging and Reporting:** Maintain detailed logs including alarm, HDD damage, equipment, and user activity logs, facilitating comprehensive analysis and auditing.

EYETRACK WEB SERVER



1. **Live GPS Tracking and Playback:** Seamlessly monitor vehicles in real-time with GPS tracking, and easily review historical routes through track playback for thorough analysis and optimization.
2. **Real-time Audio / Video Playback and Download:** Access and download audio and video recordings in real-time, ensuring prompt retrieval of critical footage for analysis and evidence collection.

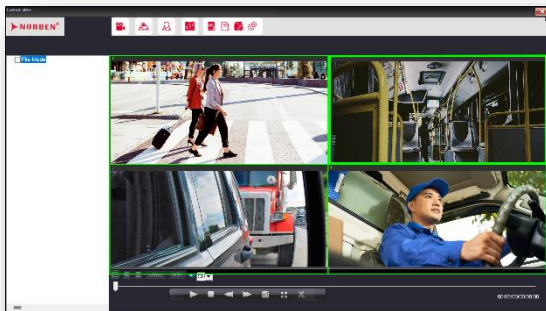
3. **Driving Behavior Analysis and Early Warning:** Utilize advanced analytics to assess driving behavior and issue early warnings, promoting safer driving practices and reducing operational risks.
4. **Alarm Prompting:** Monitoring instant alarm prompts ensuring swift response to unauthorized vehicle movements or breaches.
5. **Comprehensive Log Data Handling:** Maintain a robust log system and manage data efficiently, facilitating detailed analysis, troubleshooting, and strategic decision-making.
6. **Organization and Fleet Management:** Streamline operations by managing fundamental organizational structures, fleets, vehicles, equipment, users, and roles, ensuring optimal resource allocation and accountability.

5. **Special Area Video Hidden:** Provides the ability to hide video footage from specific areas for enhanced privacy and security.
6. **Video Data and GPS Synchronous Analysis:** Allows for synchronous analysis of video data and GPS information, enabling comprehensive monitoring and analysis of events and activities.

EYETRACK MOBILE APP



EYETRACK VIDEO PLAYER



1. **4/8CH Video Real-time Playback:** Allows real-time playback of up to 4/8 channels of video simultaneously.
2. **Image Capture:** Capture images in for detailed snapshots of video footage.
3. **Fast Forward & Reverse, Single-frame Playback:** Enables fast forward and reverse playback, as well as single-frame playback for precise video analysis.
4. **Data Backup in HDD and SD Card:** Facilitates data backup to both HDD (Hard Disk Drive) and SD card for secure storage and easy retrieval.

1. **Vehicle Real-time Video & Audio Recording and GPS Positioning:** Enables real-time recording of video and audio within vehicles, along with GPS positioning for accurate tracking and monitoring of vehicle movements.
2. **Vehicle Intercom and Broadcasting Function:** Supports two-way communication (intercom) and broadcasting functions within the vehicle for enhanced communication capabilities.
3. **Snapshot and Storage:** Allows for the capture of snapshots and storage of images for documentation and evidence purposes.
4. **PTZ Remote Control:** Supports remote control of Pan-Tilt-Zoom (PTZ) cameras for flexible adjustment of camera angles and views.
5. **Vehicle Power & Oil Remote Cut-off:** Enables remote control of vehicle power and oil supply, providing security and anti-theft capabilities.
6. **Real-time Monitoring of Vehicle Alarm Status:** Provides real-time monitoring of vehicle alarm status, allowing for immediate response to security threats or incidents.

7. Vehicle Tracking and Remote Video Playback:

Supports vehicle tracking and remote video playback functionality, allowing users to monitor vehicle movements and review recorded video footage remotely.

ORDERING INFORMATION

Part Number	Description
ENS-MCMS-BL	Vehicle Camera Video Management Software Base License
ENS-MCMS-DL	Vehicle Camera Video Management Software Device License
ENS-MCMS-CL	Vehicle Camera Video Management Software Client License