

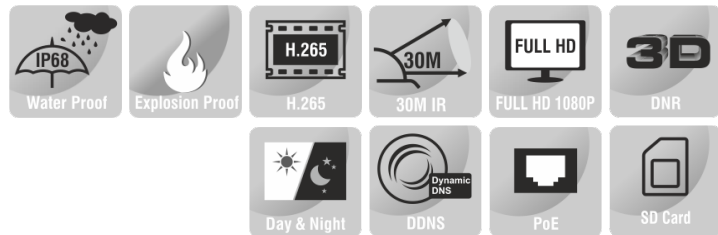
2MP EXPLOSION PROOF DOME CAMERA



ENC-HDO5F-30R-22

FEATURES

Starlight Illumination
304/316L Stainless Steel Construction
2.8 mm Fixed Lens
Smart IR up to 30 m
ONVIF Profile (S, G, T)
Triple Stream
PoE, IP68



SPECIFICATION

MODEL	Model No.	ENC-HDO5F-30R-22
	Type	2MP EXPLOSION PROOF DOME CAMERA
CAMERA	Image Sensor	1/2.8" CMOS Progressive 2.0 MegaPixel
	Day/Night	IR Cut Filter with Auto Switch
	Lens Type	Fixed
	Focal Length	2.8 mm
	Focus	Fixed
	Iris	Fixed
	Lens Mount	M12
	Angle of View (H)	101.3°
	Angle of View (V)	57.1°
	Angle of View (D)	116.2°
	Angle Adjustment	Pan 0~340°, Tilt 0~75°, Rotate 0~360°
	Aperture Range	F1.6
	Shutter	1s to 1/100,000s
	Min. Illumination	Color: 0.001 lux @ F1.6, B/W: 0 lux with IR
	AGC	Auto / Manual
	Digital Noise Reduction	3D DNR
S/N Ratio	≥60 dB	
Defog	Smart Defog	
WDR	120 dB	
Smart IR	Up to 30 m	
Wavelength	850 nm	

★Product specification and availability are subject to change without notice.

2MP EXPLOSION PROOF DOME CAMERA



ENC-HDO5F-30R-22

MODEL	Model No.	ENC-HDO5F-30R-22
	Type	2MP EXPLOSION PROOF DOME CAMERA
VIDEO	Max. Resolution	1920x1080
	Video Compression	H.265+, H.265, H.264, MJPEG
	Frame Rate	Main Stream: (1920x1080, 1280x720, 704x480, 640x480) @ 30fps, (1920x1080, 1280x720, 704x576, 640x480) @ 25fps Sub Stream: (704x480, 704x240, 640x360, 352x240) @ 30fps, (704x576, 704x288, 640x360, 352x288) @ 25fps Third Stream: (704x480, 704x240, 352x240) # 30fps, (704x576, 704x288, 352x288) @ 25fps
	Stream Settings	i-Frame, PAL/NTSC, Frame Rate (1~30FPS), EIS, SVC
	Video Bit Rate	32 kbps ~ 8 Mbps
	Bitrate Type	CBR, VBR
	Image Settings	Brightness, Contrast, Saturation, Hue, Sharpness, Rotation/Mirror, Gain, Exposure, Day/Night
	White Balance	Auto, Semi Auto, Sunshine, Daylight, Warm Light, Filament, Nature Light, Lock WB, Manual
	Corridor Mode	Supported
	HLC	Supported
	BLC	Supported
	OSD	Total 8 regions
	OSD Type	Title, Week, Date, Time, Text with different colors and adaptable sizes (16x16, 32x32, 48x48, 64x64), Image overlay
	ROI	Up to 8 regions
Privacy Mask	Up to 4 regions	
Heatmap	Supported	
SMART	Behavior Detection	Intrusion (Perimeter), Crossline (Tripwire), Double Crossline (Double Tripwire)
	Intelligent Identification	Loitering, Running, Abandoned Object (Object Left), Missing Object (Object Lost), Parking
	Statistical Analysis	Face Detection (Capture), People Counting, Crowd Detection, On Duty Detection, Helmet Detection, Human & Vehicle Classification, Abnormal Video & Audio Detection
	Alarm Management	Motion Detection, Tampering (Masking), Input & Output Event, IP & MAC Address Conflict, Disk Alarm (Full & R/W Error), FTP Server Exception, Abnormal Voltage, Pre/Post Alarm Recording, Alarm Recording/Snapshot
INTERFACE	Protocols	TCP/IP, UDP, IPv4, IPv6, ICMP, HTTP, HTTPS, FTP, NFS, DHCP, DNS, DDNS, RTP, RTSP, RTMP, PPPoE, NTP, UPnP, SMTP (SSL/TLS), IGMP, 802.1X, QoS (DSCP), Unicast, Multicast, ARP, SNMP, SSL, Telnet, SFTP (SSH), P2P
	Security	AES Video Encryption, IP Filter, User Authentication (Multiple Privilege Level), 802.1X Authentication (EAP-MD5), HTTPS Authentication, Digest Authentication, User Access Log
	Compatibility	ONVIF Profile (S, G, T), SDK/API/CGI
	Network	1 x RJ45 10M/100M Self Adaptive Ethernet Port
	Serial Interface	N/A
	Edge Storage	Micro SD card slot, up to 512 GB
	ANR	Supported
	Built-in Heater	Supported (Optional)
	Cable Interface	Pig Tail
	Remote Connection	≤7
GENERAL	Client Application	EyeConnect
	Web Language	16
	Power Supply	12V DC / PoE (802.3af)
	Max. Power Consumption	5 W
	Working Temperature	-40 °C ~ 70 °C
	Working Humidity	≤95% RH
	Atmospheric pressure	80 kPa ~ 110 kPa
	Window glass	Strong tempered glass
	Sun shade	Supported
	Ingress Protection	IP68
	Surge Protection	Supported
Reset Button	Supported	
Dimensions	191x172x158 mm	
Net Weight	6.2 Kg	

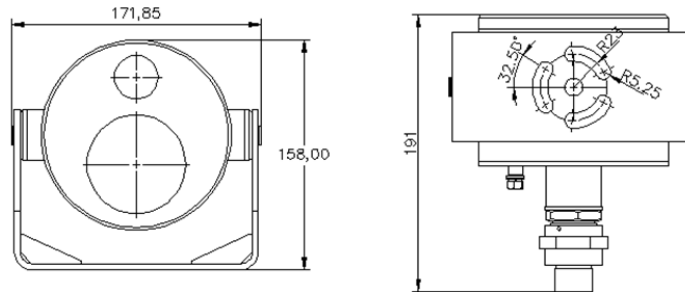
★Product specification and availability are subject to change without notice.

2MP EXPLOSION PROOF DOME CAMERA



ENC-HDO5F-30R-22

Dimension Unit : mm



ORDERING INFORMATION

Part Number	Description	Standard Quantity
ENC-HDO5F-30R-22	2MP SS316L (optional SS304) Explosion Proof IR IP Dome Camera with 2.8mm Fixed Lens, PoE, SD Card Slot, WDR, Smart Analytics and 30m IR Support	1
ENB-BZDW68	Wall Mount Bracket for Norden Explosion / Corrosion Proof Dome Camera	1
ENB-BZDH68	Corner Mount Bracket for Norden Explosion / Corrosion Proof Dome Camera	1
ENB-BZDV68	Pole Mount Bracket for Norden Explosion / Corrosion Proof Dome Camera	1
ENA-EXH010	1 Meter Explosion / Corrosion Proof Hose for Norden Explosion / Corrosion Proof Camera	1
ENA-EXH015	1.5 Meter Explosion / Corrosion Proof Hose for Norden Explosion / Corrosion Proof Camera	1
ENA-EXH020	2 Meter Explosion / Corrosion Proof Hose for Norden Explosion / Corrosion Proof Camera	1
ENB-BZPJ68	Junction Box for Norden Explosion Proof Camera	1

PACKING INFORMATION

Part Number	Packing Mode	Gross weight(Kg)	Dimension(mm)
ENC-HDO5F-30R-22	Carton Box	-	-