

NVS-20020651AM

650W PA POWER AMPLIFIER



DESCRIPTION

This amplifier is designed for commercial and industrial public address applications. Rack mount design in 2U type and rated power is 650W. Both balanced and unbalanced line inputs are available for each channel. Balanced line output feeds to another power amplifier as well as secures the signal transmission is less noise and longer distance. 70V, 100V and 4-16ohm speaker outputs are convenient for installation when selection different speaker matching. A master volume control is included. Complete protection includes clip, short circuit, high temp and overload. With indications for power, signal, clip, protection and temp.

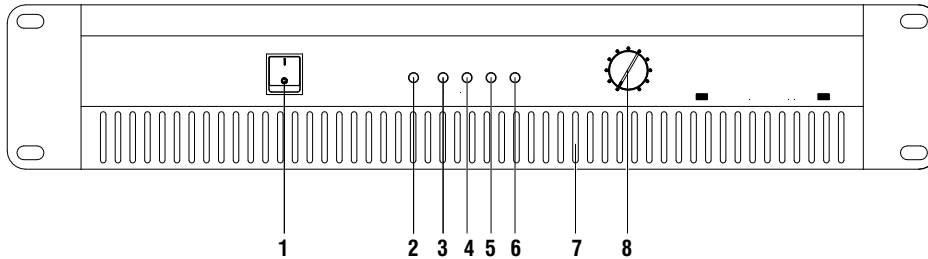
FEATURES

- ⊕ Rack mount amplifier in 2U height
- ⊕ 70V, 100V and 4-16 ohm speaker outputs
- ⊕ Isolated transformer for human safety operation
- ⊕ Rated power 650W, 5 LED indicator for status display
- ⊕ Indications for power, signal, clip, protection and temp
- ⊕ Reliable protection from overheat, overload, clip & short circuit
- ⊕ XLR socket and 6.35mm jack for additional mixer or amplifier link
- ⊕ Excellent device of radiator cooling fan ensures working effectively

Specifications	
Model	NVS-20020651AM
Rated Power	650W
Rated output voltage	70V/100V/4-16 ohm
Input sensitivity	0dBu
S/N Ratio	> 80dB
Damping Factor	200:1
Input CMRR	Greater than 90dB
THD into 4/1kHz	<0.3%
Frequency response	50Hz ~15kHz (±3dB)
Slew Rate	>15V/microsecond
Power Consumption	700W
Power requirement	AC220~240V / 50~60Hz
Unit Size (mm)	483x380x88mm
Net weight	39Kg

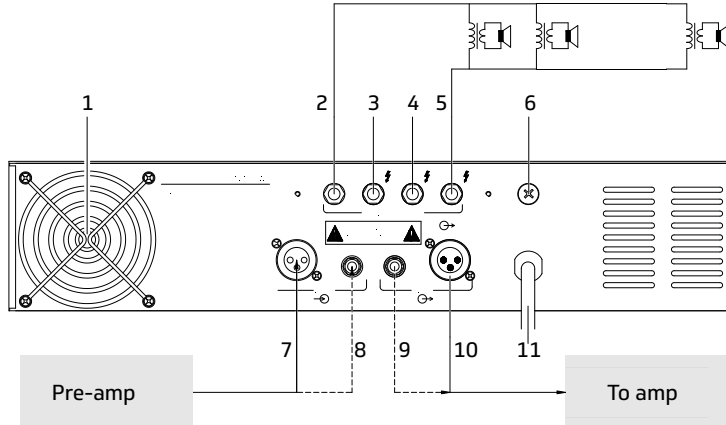
NVS-20020651AM 650W PA POWER AMPLIFIER

FRONT PANEL



1. **AC power switch** (1 is power on and the “power LED” is on)
2. **Power LED indicator**
3. **CLIP LED indicator** (Please reduce the gain to prevent Severely clipped waveforms reaching the loudspeakers)
4. **SIGNAL LED Indicator** (output level)
5. **PROT LED indicator** (DC or output circuit shorted indicator)
6. **TEMP LED indicator** (high temperature indicator)
7. **Unit’s fan exhaust window**
8. **Volume** (input attenuator)

REAR PANEL AND CONNECTION



- | | | |
|-------------------------|-------------------------|------------------------|
| 1. Fan intake window | 5. 100V output | 9. 6.35mm socket link |
| 2. COM. Output | 6. 220V AC power cord | 10. XLR link |
| 3. P1 output (4-16 ohm) | 7. XLR input | 11. 220V AC power cord |
| 4. 70V output | 8. 6.35 mm socket input | |

ORDERING INFORMATION

Part Number	Description	Standard Quantity
NVS-20020651AM	650W PA Power Amplifier	1 No.

PACKING INFORMATION

Part Number	Packing Mode	Gross Weight(kg)	Dimensions(mm)
NVS-20020651AM	Carton Box	39.0	483x380x88