

ENSURING SAFER

EDUCATIONAL ENVIRONMENTS



NEED FOR IP SURVEILLANCE IN EDUCATIONAL ENVIRONMENTS

An educational environment or a campus is a necessary component of educational facilities. Education campuses, which range from schools to universities, play a significant role in the current educational systems. A critical prerequisite for ensuring that educators can give the best education is by promising a safe and secure institutional atmosphere.

Norden Solution is scalable and adaptable, allowing it to meet the needs of any educational institution. This solution offers complete coverage, and real-time surveillance ensures the safety of students and staff by validating admission and departure to the campus. Norden extends a wide selection of cameras that aid in preventing multiple safety threats, including bullying, fighting, behavioural outbursts, and playground incidents.

Norden contributes to the safety of the educational environment, allowing educators to teach and students to study in a secure atmosphere. Norden provides a comprehensive security solution that ensures the safety of students, faculty, property, classrooms, and dorm rooms. The surveillance system Norden ensures the prevention of unauthorized access on campuses at all times.

NORDEN SECURITY PROPOSITIONS

Intelligent Norden surveillance technology can help with small vandalism to more serious crimes like breaking and arson. Norden helps protect campus property by better managing vehicle access, loitering, and access to restricted areas such as exam halls, rooftops and athletic fields. The technology allows the authority to monitor the perimeter remotely and identify the offenders if an incident occurs.

In addition to protecting school or college property, early detection of risky behaviour can also help the management protect students from accidental injury - and the campus from costly litigation. Complete campus security and surveillance solution necessitate the integration of several security and surveillance systems, including video security, a panic alarm, and overall surveillance, to name a few.

Norden offers a variety of cutting-edge and comprehensive solutions, such as ANPR Cameras, PTZ Dome Cameras, Body Temperature Detection Cameras, Fisheye and Dome Cameras, Vandal Proof Cameras, and Body Worn Cameras.



EDUCATIONAL ENVIRONMENTS NORDEN FOCUSES ON



Primary Schools



High Schools



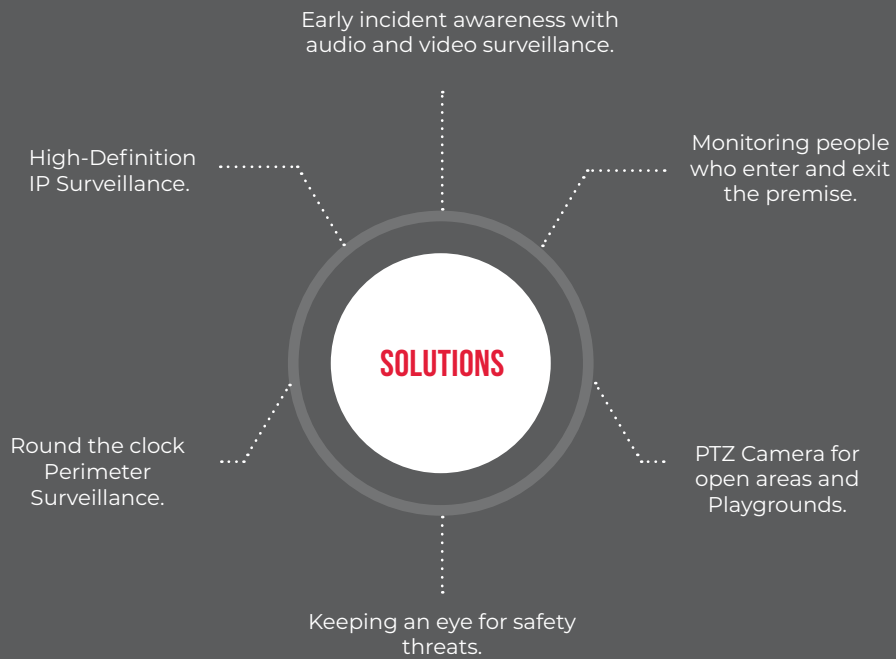
Colleges



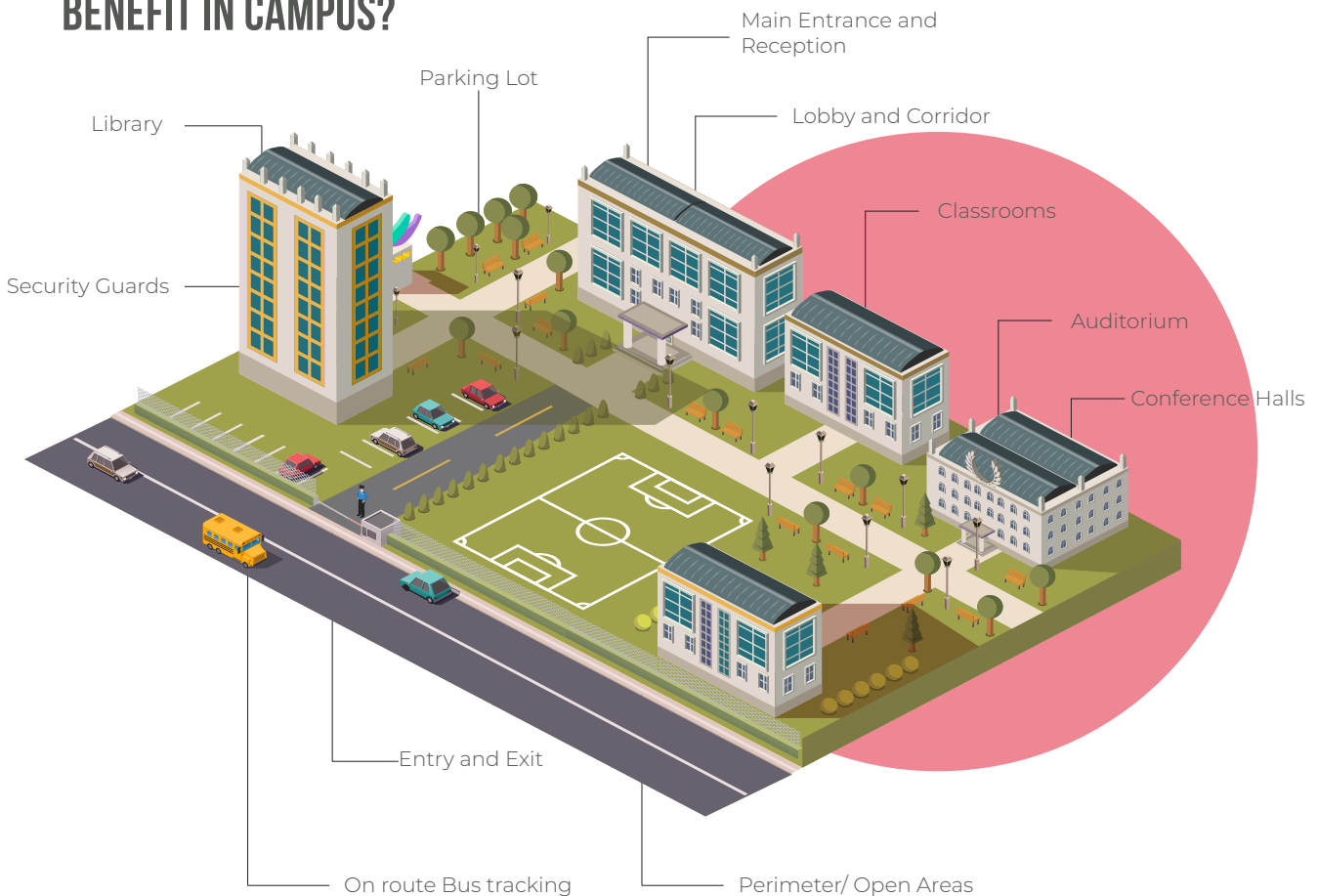
Universities

MAJOR CHALLENGES





WHERE CAN NORDEN CAMERAS BENEFIT IN CAMPUS?



SURVEILLANCE SOLUTION

ENTRANCE AND EXIT

ANPR BULLET CAMERA



- ANPR Bullet Camera extends all-in-one vehicle detection and recognition. It keeps a close eye on the vehicles entering and exiting the premises.
- The automatic number plate recognition solution instantly recognizes and monitors the vehicles and their number plates.
- The day and night functionality helps keep a constant vigilance all the time..

Technical Specification

- 2MP / 4MP/ 5MP Resolution Cameras
- Fixed Lens / Motorized Lens / Zoom Lens Cameras
- IR/Starlight Cameras with 60fps
- Smart IR distance Support up to 100 Meter
- IP67, IK10 rated Cameras
- PoE / SD Card Slot / WDR / Smart Analytics



IP BULLET CAMERAS WITH ANPR SMART BOX

- IP Bullet cameras with the ANPR integrated Smart Box offer prompt vehicle detection and recognition.
- ANPR Smart Box extends accurate reading and recognition of number plates of vehicles within the surveillance area.
- Enhanced Visual Logs with plain text translation.
- Interoperability with any surveillance system.

Technical Specification

- License Plate Detection & Character Recognition of Number Plates
- Faster Data Process
- Storage: 64GB (Default) , Expandable Upto 256GB
- Linux based OS

PARKING LOT

BULLET CAMERA



- With its intelligent identification function, bullet cameras ensure the complete supervision of parking lots.
- Monitoring of the parking area aids in preventing incidents like car accidents and thefts and provides evidence in such cases.
- This camera also keeps a watchful eye over any activities which occur in the parking lots.

Technical Specification

- 2MP / 4MP/ 5MP Resolution Cameras
- Fixed Lens / Motorized Lens / Zoom Lens Cameras
- IR/Starlight Cameras with 60fps
- PoE / SD Card Slot / WDR
- Smart IR distance Support up to 100 Meter
- IP67, IK10 rated Cameras
- Smart Analytics Supported



DOME CAMERA



- High-definition dome camera helps monitor everyone and everything coming under its surveillance.
- Installing the dome camera ensures the overall security of the parking area.
- The dome camera's Headlight Compensation and Backlight Compensation features provide clear images in all lighting conditions.

Technical Specification

- 2MP/4MP Resolution
- Fixed/Motorized Lens Cameras
- Starlight Cameras
- PoE/SD card slot/WDR
- Up to 50m IR Support
- Built-in Mic
- IP66, IP67, IK10 rated Cameras
- Smart Analytics Supported

PERIMETER AND PLAYGROUND

- This camera offers round-the-clock surveillance for the premises and open areas like playgrounds, with day and night functionality.
- The motion detection feature ensures total security and identifies intrusions in the premise area.
- The auto-tracking function assures nobody enters or exits the area unattended.
- The human and vehicle classification features help keep a close eye on every presence on the premise.

PTZ DOME CAMERA



Technical Specification

- 2MP / 3MP / 4MP / 5MP / 8MP / 16MP Resolution Cameras
- 4X / 5X / 12X / 20X / 22X / 25X / 30X / 33X / 37X / 38X / 40X / 44X Optical Zoom Lens Cameras
- IR / Starlight / Laser IR Cameras
- IR Distance up to 800 Meter
- Compression : H.264, H.265, H.265 + cameras
- IP66, IP67, IK10 rated cameras
- PoE / Non-PoE / SD card slot up to 512 GB/WDR/ Smart Analytics Cameras
- Wiper / Non-Wiper Cameras
- Auto Tracking Support



ENTRANCE AND RECEPTION

BODY TEMPERATURE DETECTION CAMERA



- This camera detects accurate temperature, offers fever scanning, and mask detection.
- It is built with the latest thermal imaging system and supports optical and thermal bispectrum imaging.
- This range of cameras is designed to spot the finest details in any circumstances and will be a perfect surveillance fit for the building entrances.
- This easy-to-handle thermal camera can ensure higher efficiency in thermal detection.

Technical Specification

- 2MP/4MP Visible Lens
- 400 ×300/ 256x192 Thermal Resolution
- Smart Analytics Supported
- Uncooled IRFPA Microbolometer
- Response Time ≤50ms
- Built-in Mic & Speaker
- ±0.3°C Measurement Accuracy
- SD card Support



DOME CAMERA



- Installing the dome camera ensures the overall security of the Entrance and Reception.
- High-definition dome camera helps monitor everyone and everything coming under its surveillance.
- The number of individuals passing through the entrance and present in the reception area can be precisely counted by the dome camera.

Technical Specification

- 2MP/4MP Resolution
- Fixed/Motorized Lens Cameras
- Starlight Cameras
- PoE/SD card slot/WDR
- Up to 50m IR Support
- Built-in Mic
- IP66, IP67, IK10 rated Cameras
- Smart Analytics Supported

LIBRARY AND CONFERENCE HALL

FISH EYE CAMERA



- The Fish Eye Camera helps keep vigilant surveillance of the entire library and conference hall.
- It offers an HD panoramic 180/360-degree view coverage of the area.
- Norden Fish Eye Camera helps reduce the other camera requirements which may arise in the area.
- This camera come with a built-in mic and speakers and a 5MP/12MP Resolution Camera

Technical Specification

- 5/12MP Resolution
- Fixed Lens
- Up to 20m IR Support
- Built-in Mic & Speaker
- IP67, IK10 rated Cameras
- PoE/SD card slot
- Smart Analytics



DOME CAMERA

Technical Specification

- 2MP/4MP Resolution
- Fixed/Motorized Lens Cameras
- IR/Starlight Cameras
- Up to 50m IR Support

- High-definition dome camera helps monitor everyone and everything coming under its surveillance.
 - With the face recognition feature, these cameras detect the faces of everyone within the surveillance perimeter.
 - Installing these dome cameras ensures the overall security of the the library and the conference hall.
- Built-in Mic
 - IP66, IP67, IK10 rated Cameras
 - PoE/SD card slot/WDR
 - Smart Analytics

CLASSROOMS AND CORRIDORS



Technical Specification

- 2MP/4MP Resolution
- Fixed/Motorized Lens Cameras
- IR/Starlight Cameras
- Up to 50m IR Support
- Built-in Mic
- IP66, IP67, IK10 rated Cameras
- PoE/SD card slot/WDR
- Smart Analytics

- Dome cameras are starlight cameras that offer both fixed and motorized lenses that can help monitor everyone who comes into classrooms and the Corridors.
- With the face recognition feature, these cameras detect the faces of everyone within their surveillance perimeter.
- Installing these dome cameras ensures the overall security in the classrooms and Corridors.



AUDITORIUM AND CAFETERIA

BULLET CAMERA



- With its intelligent identification function, this camera ensures complete supervision of the auditorium and cafeteria.
- Norden Bullet cameras never miss any detail and extend a total coverage of the auditorium often active with events.
- This camera keeps an account of activities and monitors the premises with a watchful eye over people within the area.

Technical Specification

- 2MP / 4MP/ 5MP Resolution Cameras
- Fixed Lens / Motorized Lens / Zoom Lens Cameras
- IR/Starlight Cameras with 60fps
- PoE / SD Card Slot / WDR
- Smart IR distance Support up to 100 Meter
- IP67, IK10 rated Cameras
- Smart Analytics Supported



DOME CAMERA



- The High-definition dome camera helps monitor everyone within the auditorium and cafeteria.
- With the face recognition feature, these cameras detect faces and enhance the overall security of the entrusted area.

Technical Specification

- 2MP/4MP Resolution
- Fixed/Motorized Lens Cameras
- Starlight Cameras
- PoE/SD card slot/WDR
- Up to 50m IR Support
- Built-in Mic
- IP66, IP67, IK10 rated Cameras
- Smart Analytics Supported

SECURITY GUARDS

BODY WORN CAMERA



- This camera comes with a built-in 4G Wi-Fi GPS option making it more efficient and effective for security purposes.
- It offers a true 4K video resolution and a one-touch recording option.
- Having an Infrared night vision option makes the Body Worn camera a very convenient solution for the security guards carrying them.
- Body Worn camera comes with a high-quality built-in microphone.

Technical Specification

- 32/36/64 MP Resolution
- 10m IR Support
- 2.0 inch LCD Display
- H.264/H.265 video compression
- Bluetooth, 3G, 4G, Wi-Fi, GPS/BDS
- 3400mAH battery
- SD Card support
- Rugged Features: IP67, 2M Drop Resistant



ON-ROUTE TRACKING OF VEHICLES



- Vehicle cameras have an Anti-shake feature making them a perfect fit for vehicles.
- The DSM and ADAS Technology enables the vehicle cameras to ensure the vehicle's and its driver's safety.
- It can be connected to the control room, ensuring real-time live tracking of the vehicles leaving the campus on duty.

Technical Specification

- Dome / Bullet Camera
- 2MP Resolution
- Up to 20m IR Support
- SD card support
- M12 / RS45 Connector
- DSM & ADAS Support
- GPS, Wi-Fi and GSM support MNVR







EUROPE

Norden Communication UK Ltd.
18th & 19th Floor, 100 Bishopsgate, London EC2N
4AG, United Kingdom
Tel : +44 (0) 2045405070
E-mail: salesuk@norden.co.uk

USA

Norden Communication USA Inc,
2832 E. Lantana Dr Chandler, AZ 85286,
United States of America.
Mob: +1(480)221-0959
E-mail: sales.usa@nordencommunication.com

ASIA-PACIFIC

Norden Singapore PTE Ltd..
7 Temasek Boulevard,
#12-07 Suntec Tower One
Singapore 038987
Tel: +65 6589 8449
Fax: +65 6917 8977
E-mail: sales@norden.com.sg

Norden Communication Pvt Ltd.
Office # 44, Novel Office Central
#8/2, Yellappa Shetty layout,
Ulsoor road, Bangalore 560042, India
Tel: 080 4146-8722
E-mail: sales@norden.in

Norden Vietnam, 6th floor, Room 602,
Halo building,39 Dinh Cong Trang street,
Tan Dinh Ward, District 1,Ho Chi Minh city,
Vietnam.
Mob:+84 903 88 69 92
E-mail: sales@norden.com.sg

MIDDLE EAST & AFRICA

Norden Communication Middle East FZE,
P.O. Box. 341072,
Dubai Silicon Oasis
Dubai, UAE
Tel: +971 4 3926391
Fax: +971 4 3926395
E-mail: sales@nordenco.ae

HEAD QUARTERS

Norden Communication UK Ltd.
18th & 19th Floor, 100 Bishopsgate, London EC2N
4AG, United Kingdom
Tel : +44 (0) 2045405070
E-mail: salesuk@norden.co.uk
www.nordencommunication.com



WWW.NORDENCOMMUNICATION.COM

