

CORROSION PROOF WASHING TANK



ENH-CT6600

FEATURES

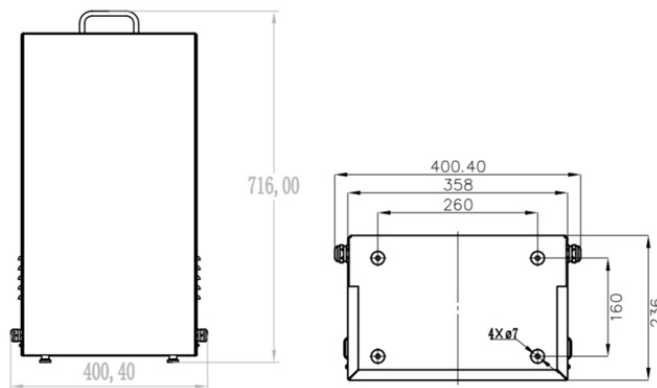
316 L Stainless Steel
Washing System for Safe Area
10 L Water Capacity
IP66



SPECIFICATION

MODEL	Model No.	ENH-CT6600
	Type	CORROSION PROOF WASHING TANK
GENERAL	Power Supply	DC 24V / AC 220V / AC 24V (Optional)
	Capacity	10 L
	Water	Windshield Washer Fluid
	Max Pressure	130 PSI (0.9 MPa)
	Water Spray Form	Atomizing
	Max. Flow	0.45 GPM (1.7 L/min)
	Protocol	Pelco-D (9600 Baud rate)
	Control Way	RS485 (by using Preset)
	Ingress Protection	IP66
	Corrosion Resistant	Sprayed with Oxygen, Hydrogen Sulphide, Carbon Dioxide and Nitrogen
	Category of Corrosivity	C5
	Material	316L
	Dimension	400.4x236x716 mm
	Weight	27.0 kg
Accessories	10m Pipe	

Dimension Unit : mm



★Product specification and availability are subject to change without notice.

CORROSION PROOF WASHING TANK



ENH-CT6600

ORDERING INFORMATION

Part Number	Description	Standard Quantity
ENH-CT6600	IP66 Rated 316L Corrosion Proof Washing Tank.	1

PACKING INFORMATION

Part Number	Packing Mode	Gross weight(Kg)	Dimension(mm)
ENH-CT6600	Carton Box	-	-