

Explosion Proof Washing Tank



ENH-ET6600

FEATURES

304 / 316 L Stainless Steel

Washing System for Safe Area

10 L Water Capacity

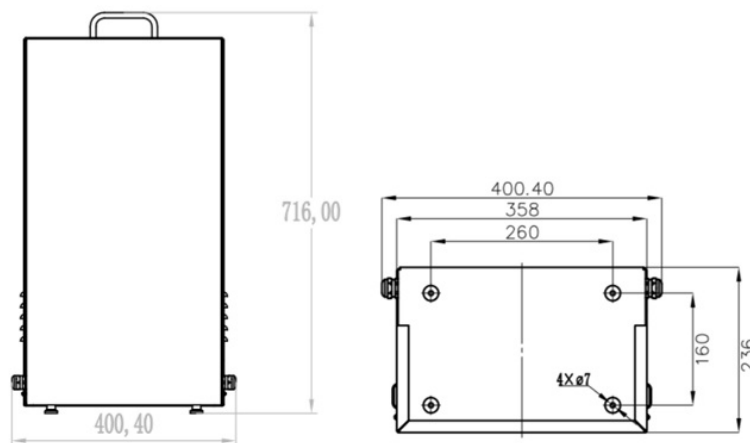
IP66



SPECIFICATION

MODEL	Model No.	ENH-ET6600
	Type	Explosion Proof Washing Tank
GENERAL	Power Supply	DC 24V
	Capacity	10 L
	Water	Windshield Washer Fluid
	Max. Pressure	0.9MPa
	Water Spray Form	Atomizing
	Max. Flow	1.7L/min
	Working Temperature	-20°C to +60°C
	Control Way	RS485 (by using Preset)
	Ingress Protection	IP66
	Material	304 / 316L
	Apparent Power	1W
	Dimension	400.4x236x716mm
Weight	27.0 kg (without waper)	
Accessories	10m pipe and sprayer	

Dimension Unit : mm



ORDERING INFORMATION

Part Number	Description	Standard Quantity
ENH-ET6600	IP66 Rated SS304 (316L optional) Explosion Proof Washing Tank	1

★Product specification and availability are subject to change without notice.

►NORDEN® | Explosion Proof Washing Tank - GB - Version: 2.0

www.nordencommunication.com

Explosion Proof Washing Tank



ENH-ET6600

PACKING INFORMATION

Part Number	Packing Mode	Gross weight(Kg)	Dimension(mm)
ENH-ET6600	Carton Box	-	-